

PART OF N.E. 1/4
SECTION 16, T.6N.R.1W., S.L.B.&M.

19-3

TAXING UNIT: 25

IN OGDEN CITY
SCALE 1" = 50'

125 SOUTH ST.

SOUTH EL. RANCHO NO. 4 SUBD.
SEE P. 17

SOUTH EL. RANCHO NO. 5 SUBDIVISION
SEE P. 18

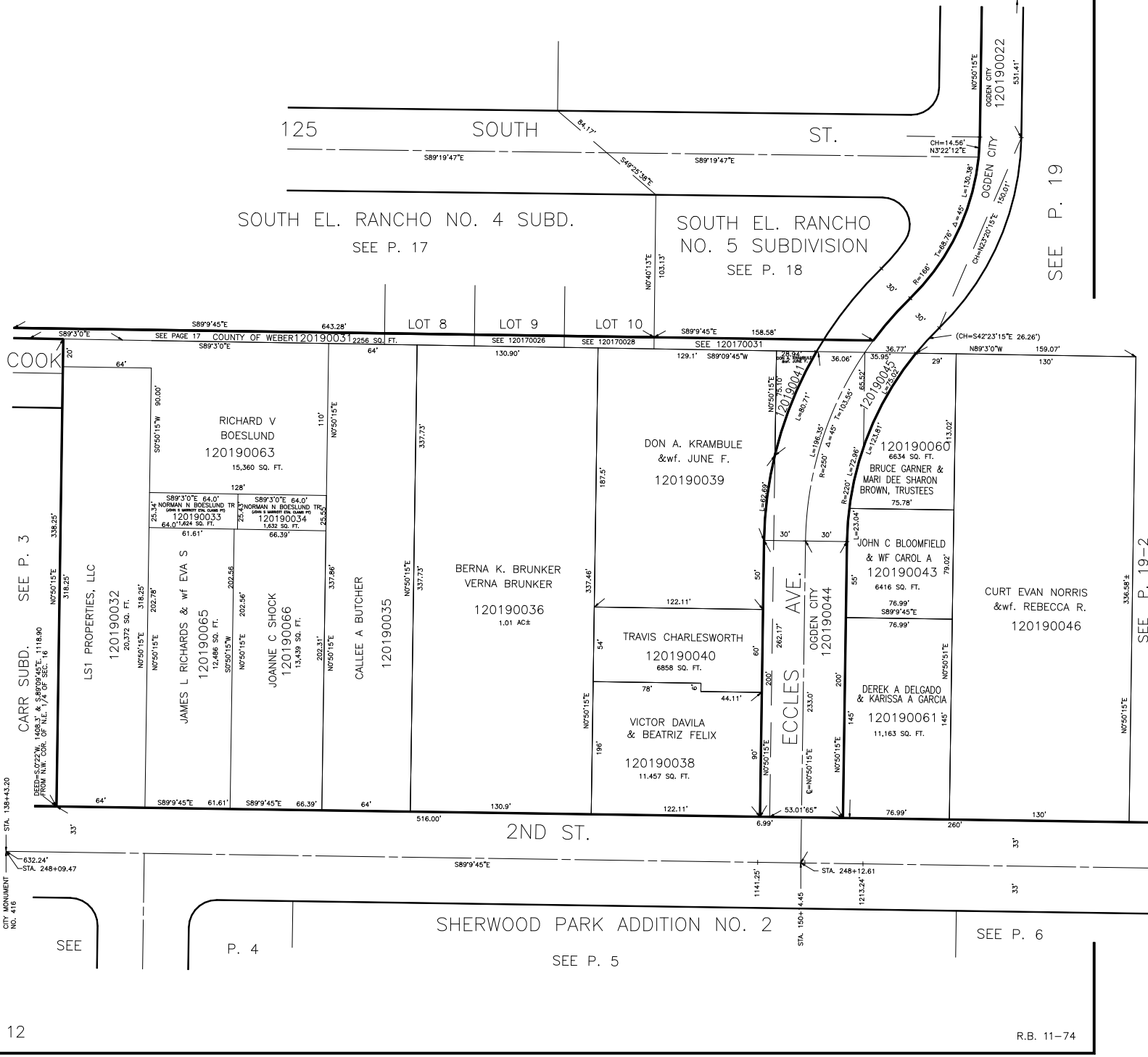
SEE P. 19

COOK

CARR SUBD.
SEE P. 3

CITY MONUMENT
NO. 416

12



SEE P. 19-2

SEE

P. 4

SEE P. 5

SEE P. 6

R.B. 11-74